

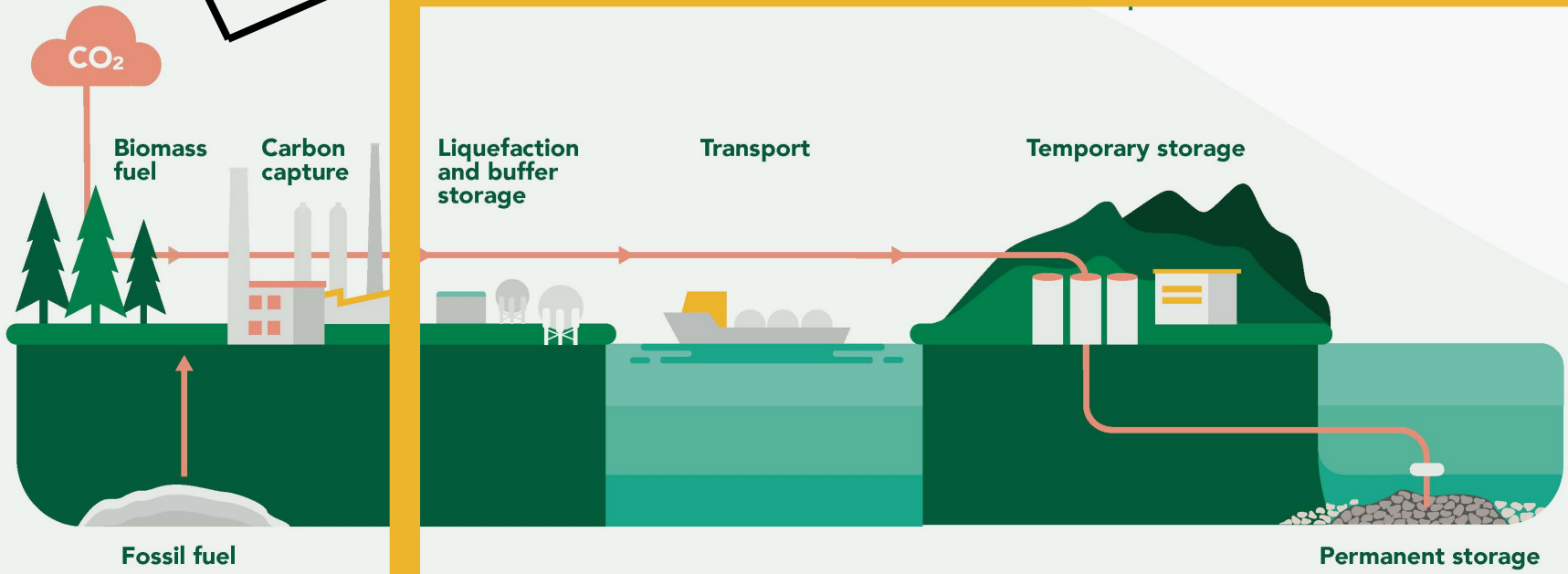
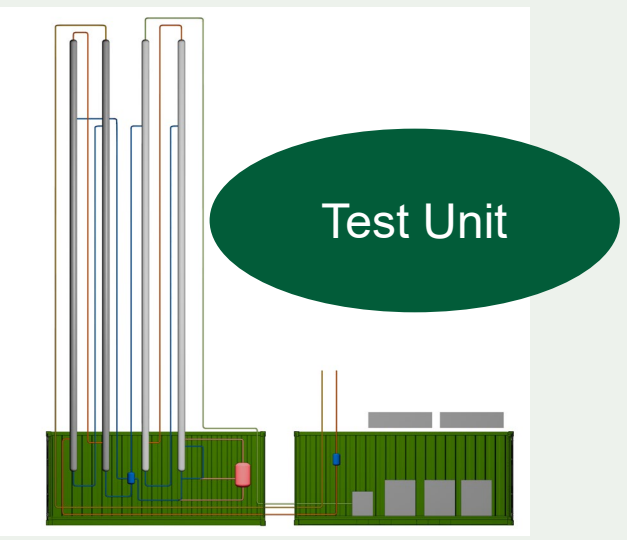


CAPTIMISE

we enable carbon capture



Feasibility Studies





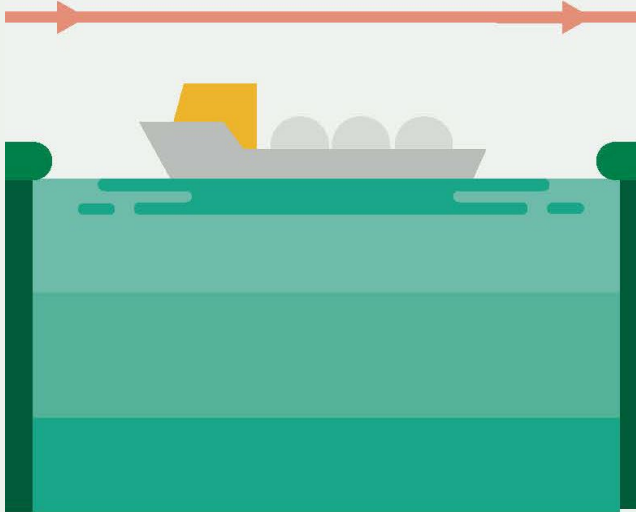
Permanent storage sites

Horisont Energi	2025
Northern Light	2024
Acorn	2025
Endurance	2027
Portos	2024
Athos	2026
Greensand, SPM	2025
Ervia	2027
Carbfix	2025



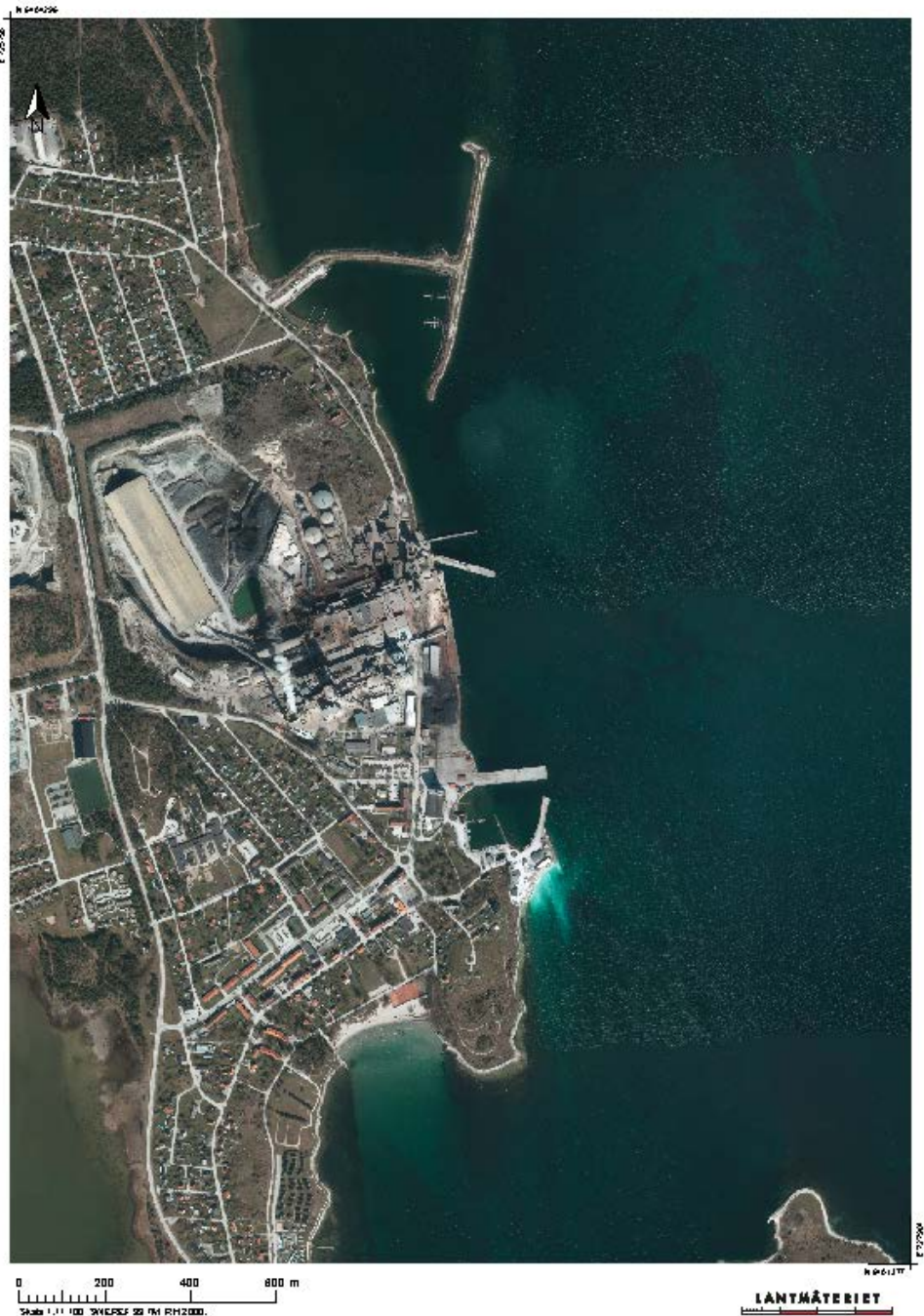


Transport



Ship design and ownership

- Loading capacity
- CO2 Hubs
- Temperature and pressure: 7 bar/-55°C vs 15 bar/-25°C
- Type of fuel
- Type of contract

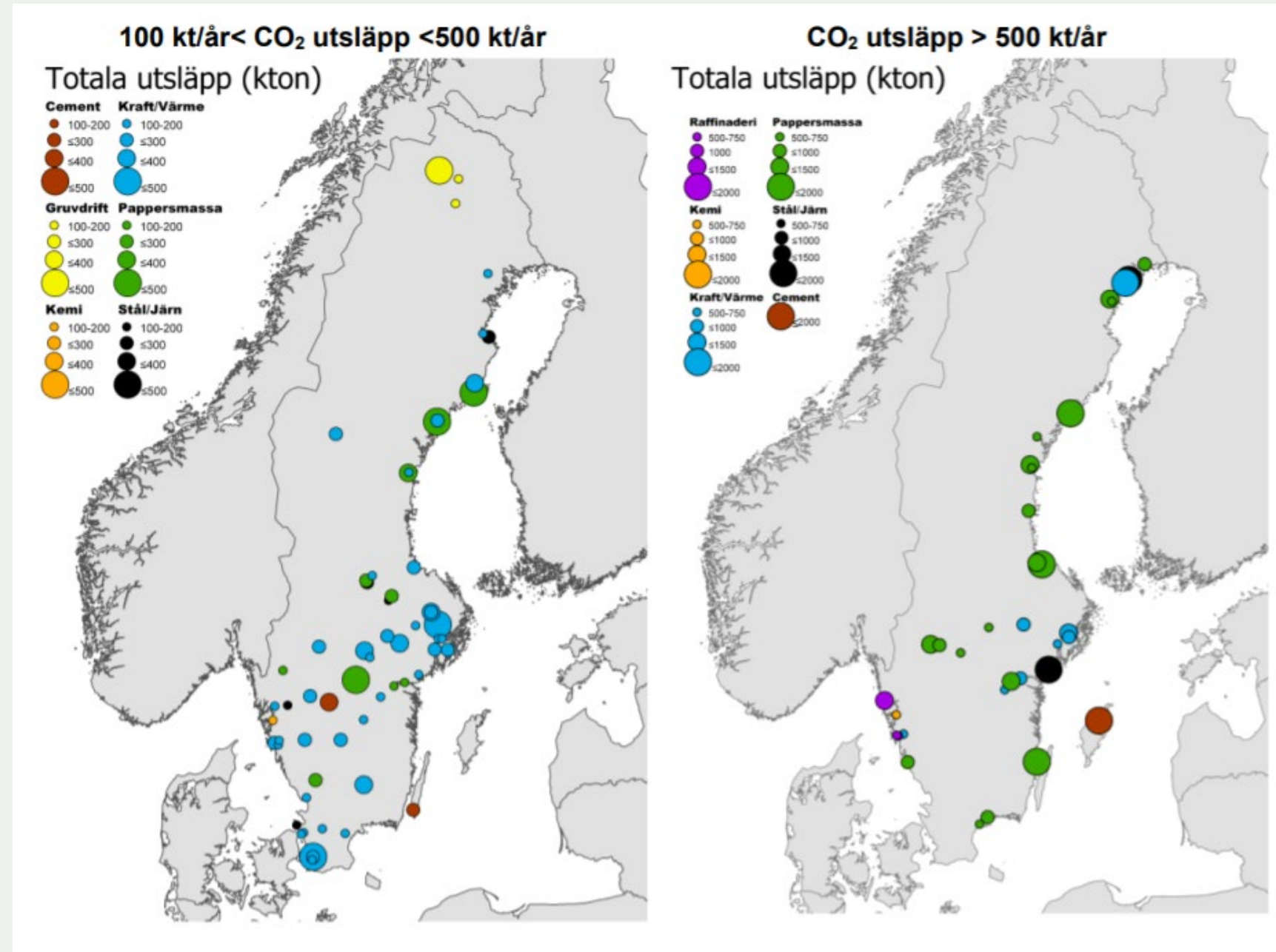


Harbour capacities

- Liquefaction unit
- Buffer Storage
- Out-shipment area
- Land-based transportation connections
- Capacity for inland regions too



Harbour capacities needs to cover inland regions too



F. Jonsson & J. Kjærstad, "Avskiljning, transport och lagring av koldioxid i Sverige", 2019



What to think about

- The generic ships may not be suitable for the emitter (too small/big) due to volume of CO₂
- The ships may not fit into the harbor
- Discuss temperature and pressure options
- Ensure harbor capacity for the whole region
- CO₂ Hubs – a sharing economy model
- National carbon dioxide infrastructure
- Larger collaborations networks calls for synchronized starting points for many BECCS projects



CAPTIMISE

Contact us on info@captimise.com or visit our website www.captimise.com